

Alto Sax

Oh Happy Day

牧師&SAX 入場

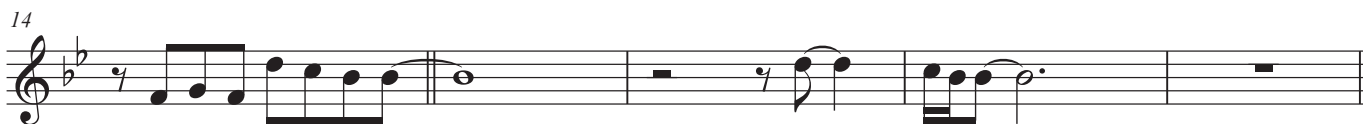
♩ = 110

Intro.

A



B



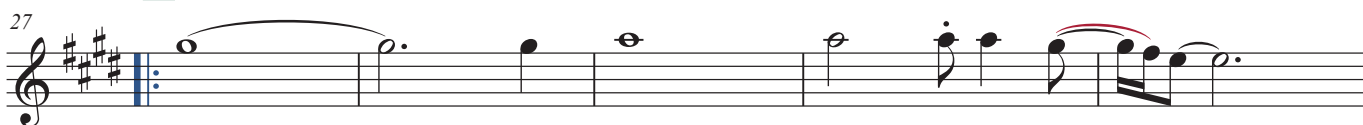
C



D



E



Piano

Oh Happy Day

牧師 & SAX 入場

Intro.

♩ = 110

Piano

Db Gb/Db Db Gb

A

Pno.

5 Db Gb/Db Db Bb7

Pno.

9 Ebm7 Ab Ebm7 Ab

Pno.

13 Ebm7 Ab B Db Gb/Db

Pno.

17 Db Gb/Db C Db Gb/Db

Oh Happy Day

D \flat

G \flat /D \flat

D

B \flat

E \flat /B \flat

21

Pno.

Piano score for measures 21-24. The key signature is B-flat major (three flats). Measure 21 starts with a D-flat chord. Measures 22-24 feature a sequence of chords: G-flat/D-flat, D (highlighted in a green box), B-flat, and E-flat/B-flat. The melody in the right hand consists of eighth and quarter notes, while the left hand plays a steady quarter-note bass line.

B \flat

D 7sus

E G

25

Pno.

Piano score for measures 25-28. Measure 25 begins with a B-flat chord. Measures 26-28 feature a sequence of chords: D 7sus, E (highlighted in a green box), and G. The melody in the right hand includes a triplet of eighth notes in measure 25. The left hand continues with a quarter-note bass line.

C

C/F

G/C

C

D7

G

29

Pno.

Piano score for measures 29-32. The key signature changes to C major (no sharps or flats). Measures 29-32 feature a sequence of chords: C, C/F, G/C, C, D7, and G. The melody in the right hand continues with eighth and quarter notes. The left hand plays a quarter-note bass line. A first ending bracket labeled '1.' spans measures 31 and 32.

D 7sus

G

33

Pno.

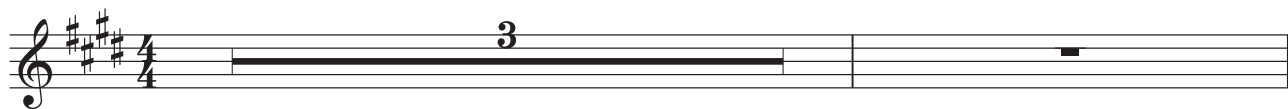
Piano score for measures 33-36. Measures 33-36 feature a sequence of chords: D 7sus and G. The melody in the right hand includes a triplet of eighth notes in measure 33. The left hand plays a quarter-note bass line. A second ending bracket labeled '2.' spans measures 35 and 36, leading to a final double bar line.

Alto Sax

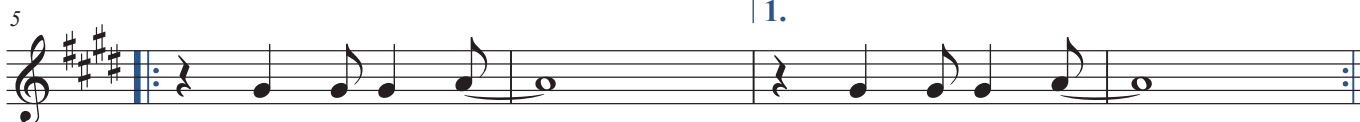
Oh Happy Day (Short ver.)

牧師&SAX 入場

♩ = 110 **Intro.**



A



1.



2.

Piano

Oh Happy Day (Short ver.)

牧師&SAX 入場

Intro.

♩ = 110

Piano

Chords: G, C/G, G, C

The introduction consists of 8 measures in 4/4 time. The right hand plays a melody of eighth notes: G4, A4, B4, C5, B4, A4, G4, F#4. The left hand plays a bass line of eighth notes: G3, F#3, E3, D3, C3, B2, A2, G2. The tempo is marked as 110 beats per minute.

A

Pno.

Chords: G, C/G, G, C/G

The first system of the main melody (measures 1-4) is marked with a green box 'A'. It features a melody in the right hand and a bass line in the left hand. The tempo is 110 bpm.

Pno.

Chords: G, C/G, G

The second system of the main melody (measures 5-8) continues the melody and bass line. It includes first and second endings, marked with '1.' and '2.' respectively.